

6

5

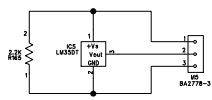
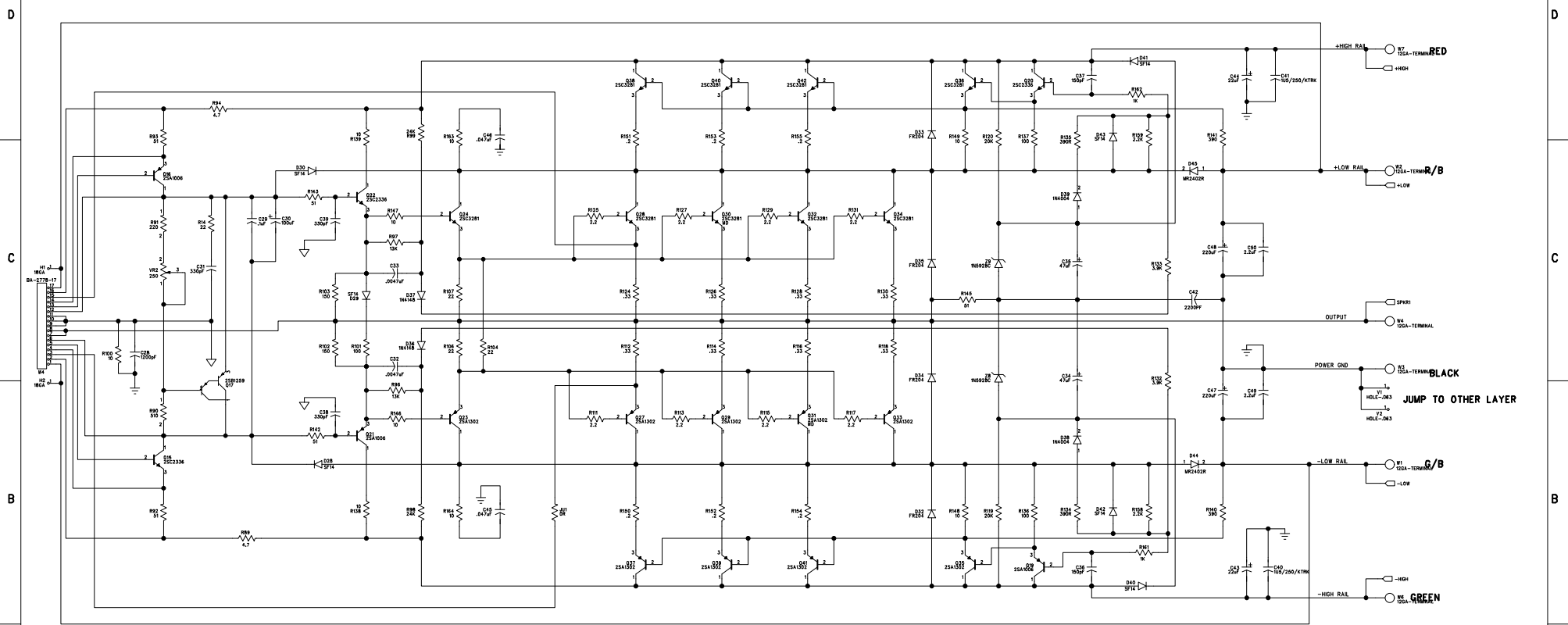
4

3

2

1

REVISION RECORD			
LTN	ECO NO.	APPROVED:	DATE:



Q30 & Q31 NOT INSTALLED ON CA6

CRESTAUDIO

CA 6, 9 OUTPUT MODULE

DRAWN:	DATE:	8/15/94		
CHECKER:	DATE:	CODE:	SIZE:	DRAWING NO:
QUALITY CONTROL:	DATE:	D		2949-01
RELEASED:	DATE:	SCALE:		SHEET 1 OF 2

REV:	0
------	---

6

5

4

3

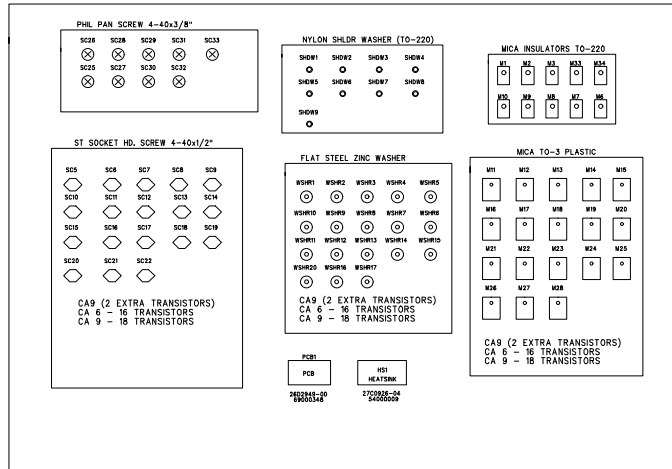
2

1

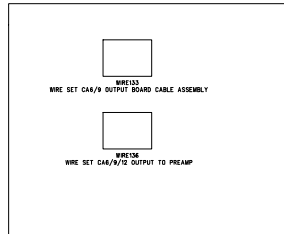
REVISION RECORD			
LTR	ECO NO.	APPROVED	DATE

REV-1 BOARDS WERE NOT SENT OUT
 CA 6,9 OUTPUT WAS 7001 OUTPUT PCB
 SCHEMATIC MATCHES REV-1 EXCEPT FOR VALUES
 LAYOUT WAS DONE USING OLD DATABASE
 SEVERAL RESISTOR PINS 1 & 2 ARE SWAPPED BETWEEN SCHEMATIC AND PCB
 RESISTOR PINS FIXED ON REV-1

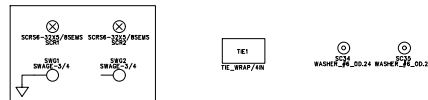
HEATSINK MODULE ASSY.



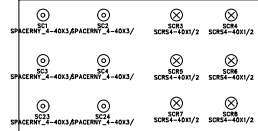
WIRE ASSEMBLY



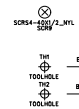
FASTEN PREAMP TO OUTPUT PCB



FASTEN OUTPUT PCB TO HEATSINK



LW35DP



TITLE:
CA 6. 9 OUTPUT MODULE

DRAWN:	DATED:	CODE:	SIZE:	DRAWING NO:	REV:
CHECKED:	DATED:	D		2949-00	0
QUALITY CONTROL:	DATED:				
RELEASED:	DATED:				
SCALE:				SHEET: 2 OF 2	